



## SixDOF Testing & Analysis Newsletter

August/September 2024

### ENGINEERING ANSWERS through TESTING & ANALYSIS

SixDOF Testing and Analysis (6D) provides answers to mechanical engineering challenges throughout all phases of the product lifecycle. From upstream design validation to field testing, troubleshooting and next generation product development we help our customers achieve measurable improvements to product innovation, quality, reliability, and performance.



### Acquiring and Applying Accurate Loads to Simulation Models



Even the best high-fidelity structural simulation model may prove worthless if we do

Simulation models help predict how structures and materials respond to external forces. However, inaccurate load application can lead to erroneous results, potentially compromising safety and performance.

Accurate load representation identifies actual stress concentrations, deformations, and potential failure points. The results are better design optimization and risk assessment. It also ensures compliance with design standards and increasingly rigid regulatory requirements

not apply accurate loads and boundary conditions.

This paper describes the use of True-Load software to evaluate the durability of a front-end loader linkage.

Read the paper [here](#).

6D is revolutionizing this process by verifiably determining the true loads that apply to the model and, in fact, any location on the model. In doing so, we not only verify that the model accurately simulates reality but also those locations of potential failure or areas of excessive overdesign.

[Read More](#)

---

## Our Partnership with Wolf Star Technologies



Our Wolf Star Technologies partnership represents a powerful union of expertise that solves mechanical engineering challenges of the modern world. This is done with an integrated testing and simulation approach while leveraging the innovative engineering software of True-Load.

Together, 6D and Wolf Star are reshaping the approach to product development by providing engineers with unparalleled customer service, expertise, and results.

[Learn the Benefits](#)

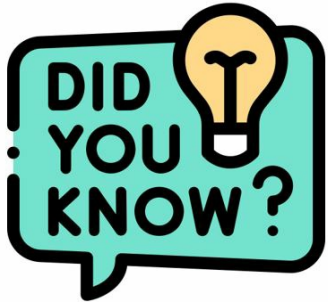
---

## Service Spotlight: Test Plan Development



Testing provides the data and insight to predict and measure performance, validate design integrity, and pinpoint areas of concern. Because of this, the ultimate success of any new product or design change is directly tied to the accuracy and quality of data that is collected. Follow the link below to learn more about our test plan development services.

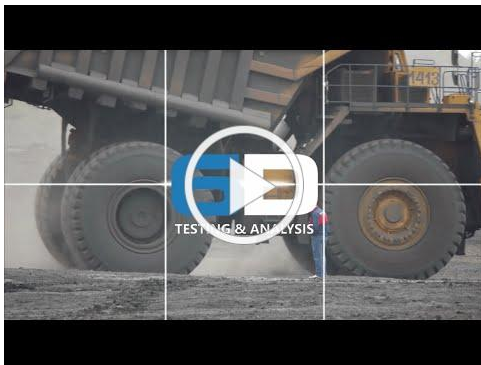
[Learn More](#)



*6D founders and senior management pioneered many of the engineering testing, data collection, and analysis technologies and methods that are today standard throughout the industry. And we apply this expertise and experience each project we undertake.*

[Learn More](#)

## From our Video Library



[6D in 60 Seconds](#)



[Video: Assisted Testing](#)

## Connect with 6D!

Read and watch our latest company news and get a few practical tech tips along the way. Follow the links below to check us out!

Find us on: [LinkedIn](#) or [YouTube](#)

**IN CASE YOU  
MISSED IT**

**A Blast from the Past...**

[Slip Rings or Telemetry: Which is best for testing rotating equipment?](#)

[Unattended Testing](#)

View our library of newsletters [here](#)

SixDOF Testing & Analysis | [www.sixdtest.com](http://www.sixdtest.com)

SixDOF Testing & Analysis | 215 Main Street - Suite A | Milford, OH 45150 US

[Unsubscribe](#) | [Update Profile](#) | [Constant Contact Data Notice](#)



Try email marketing for free today!